

WVG Traffic Analysis

Westminster Glen Avenue - May 2015

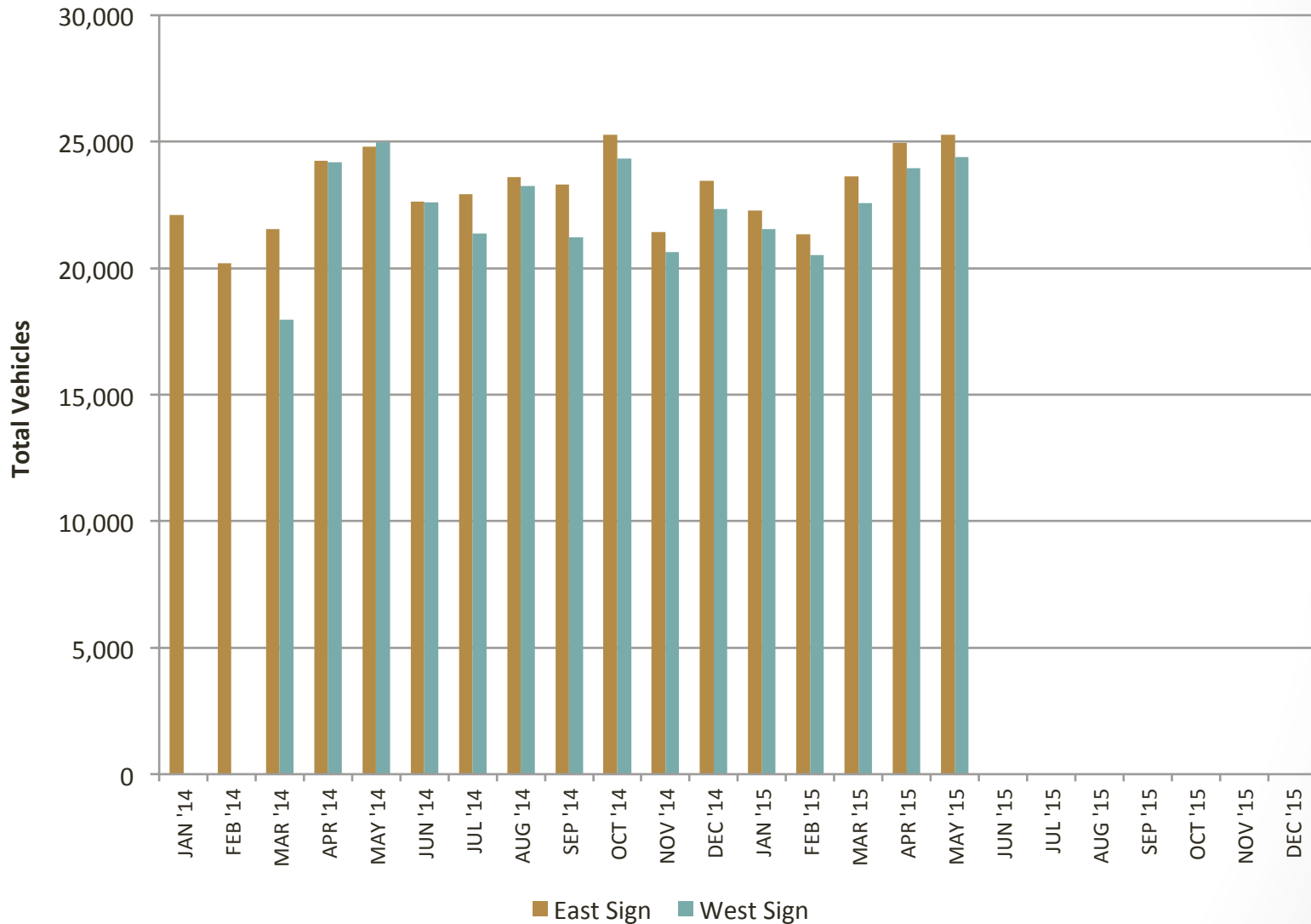
Westminster Glen Ave. Traffic Summary

May 2015*

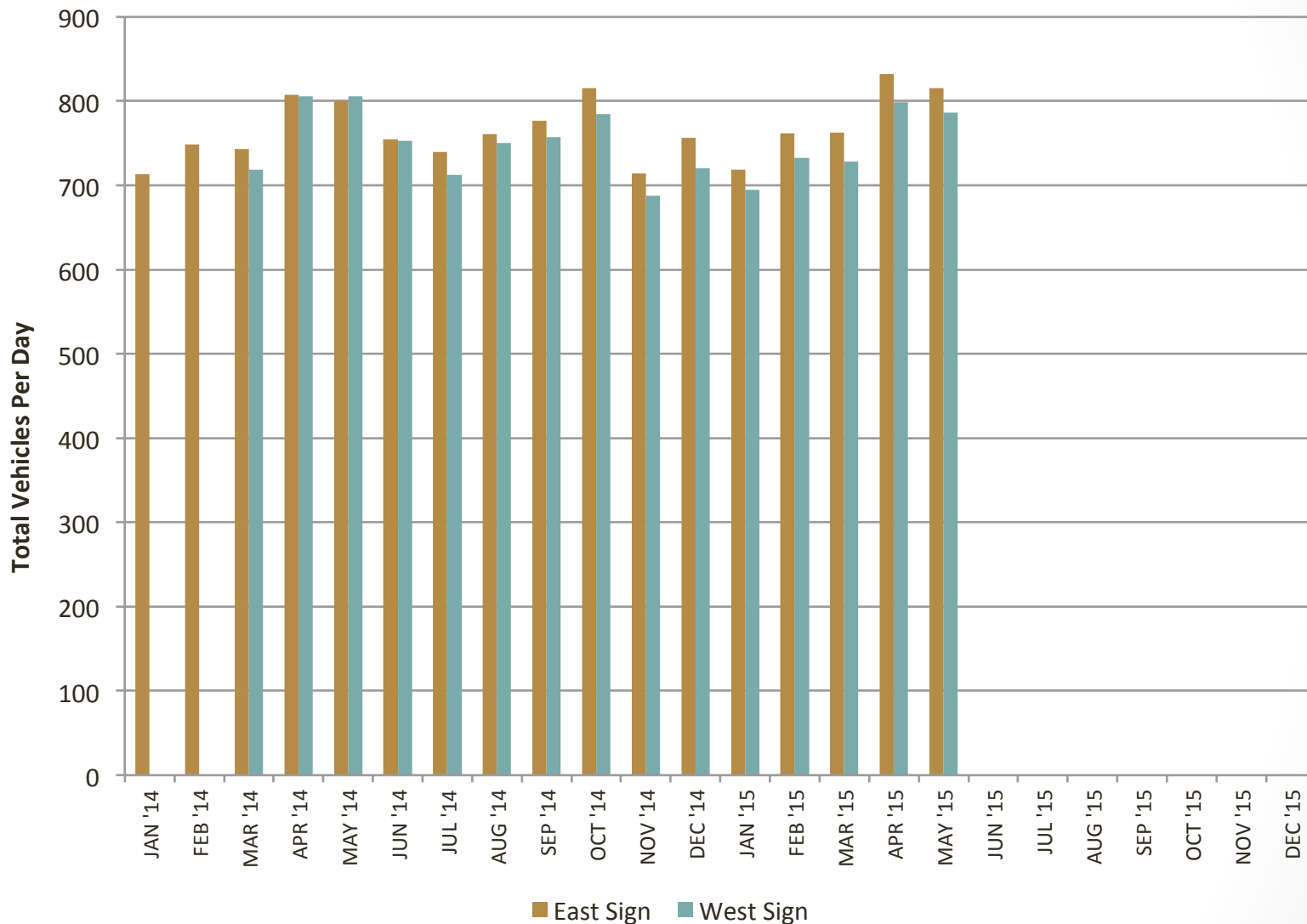
- Total vehicle count was 25,276.
 - Up 1.9% from May 2014 and up 1.2% from April 2015.
- Daily average vehicle count was 815.
 - Up 1.9% from May 2014 and down 2% from April 2015.
- Average Speed was 32.5 MPH.
 - Up from 32.1 in May 2014 and up from 31.9 in April 2015.
- Peak speed was 84 MPH, second highest on record.
- Percent of vehicles violating the speed limit was 63%.
 - Up 3ppts from May 2014 and 4ppts from April 2015.
- No patrols were present during the month. No compares are available.

* East Sign Only

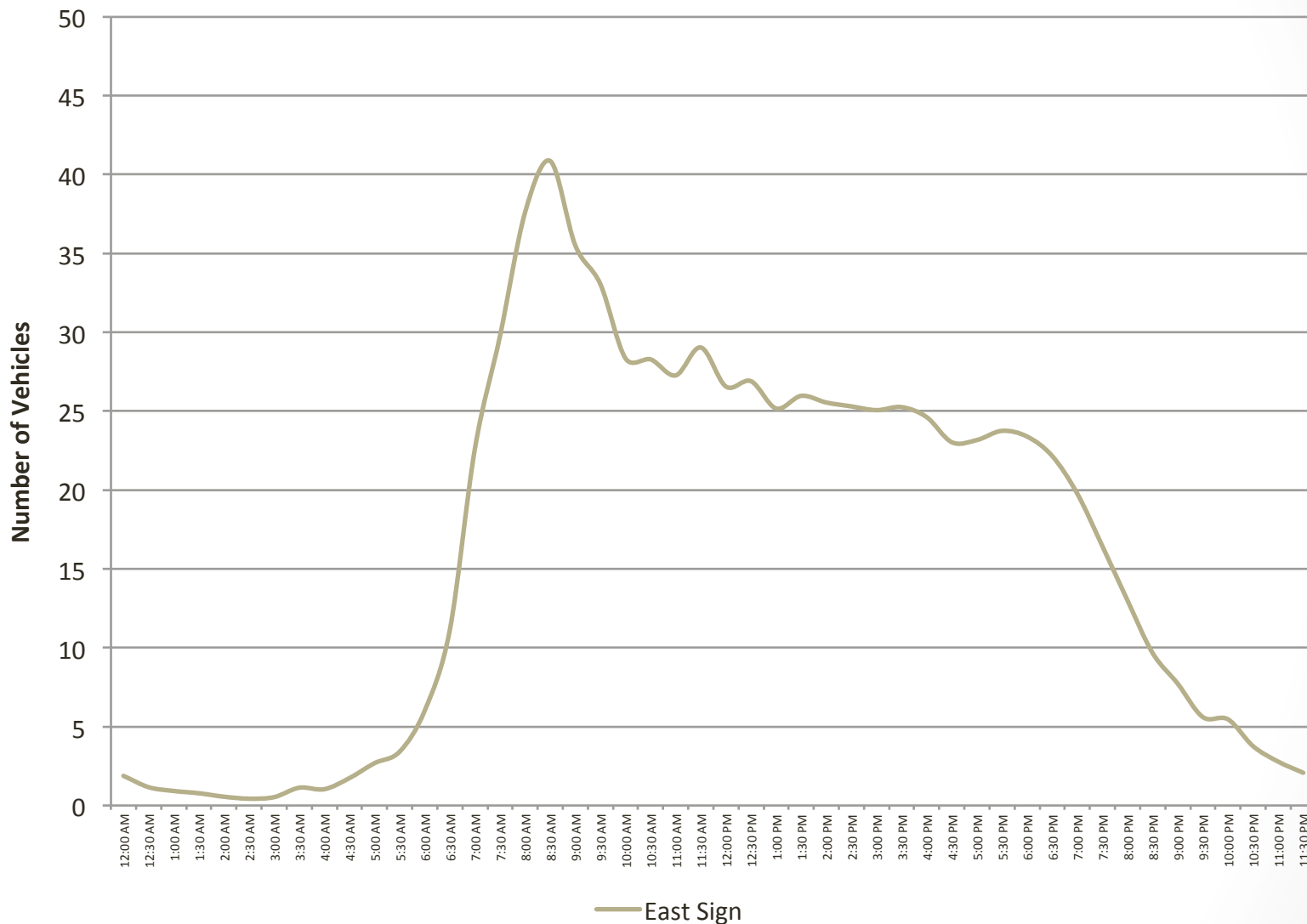
Total Traffic Volume by Month



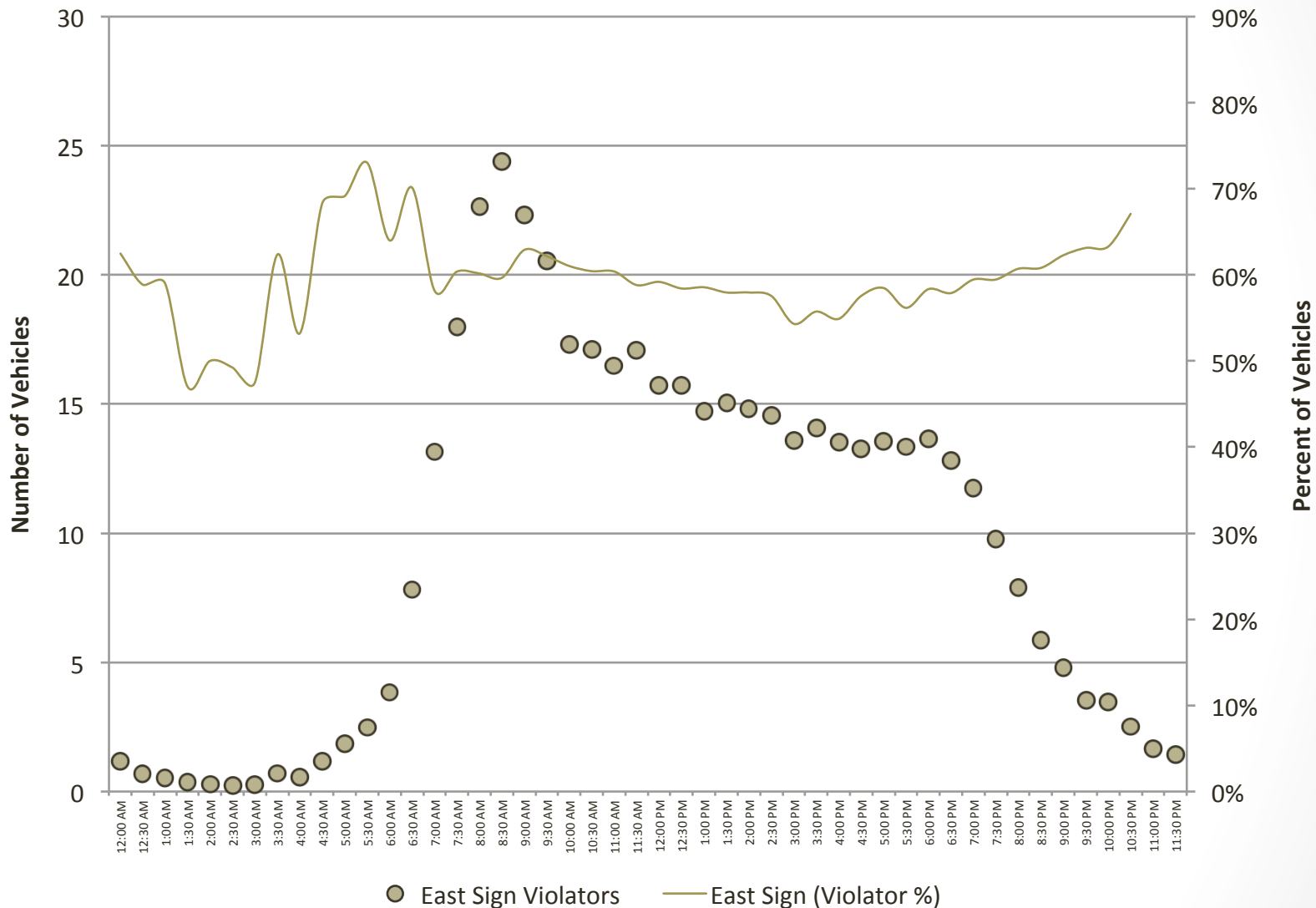
Daily Average Traffic Volume by Month



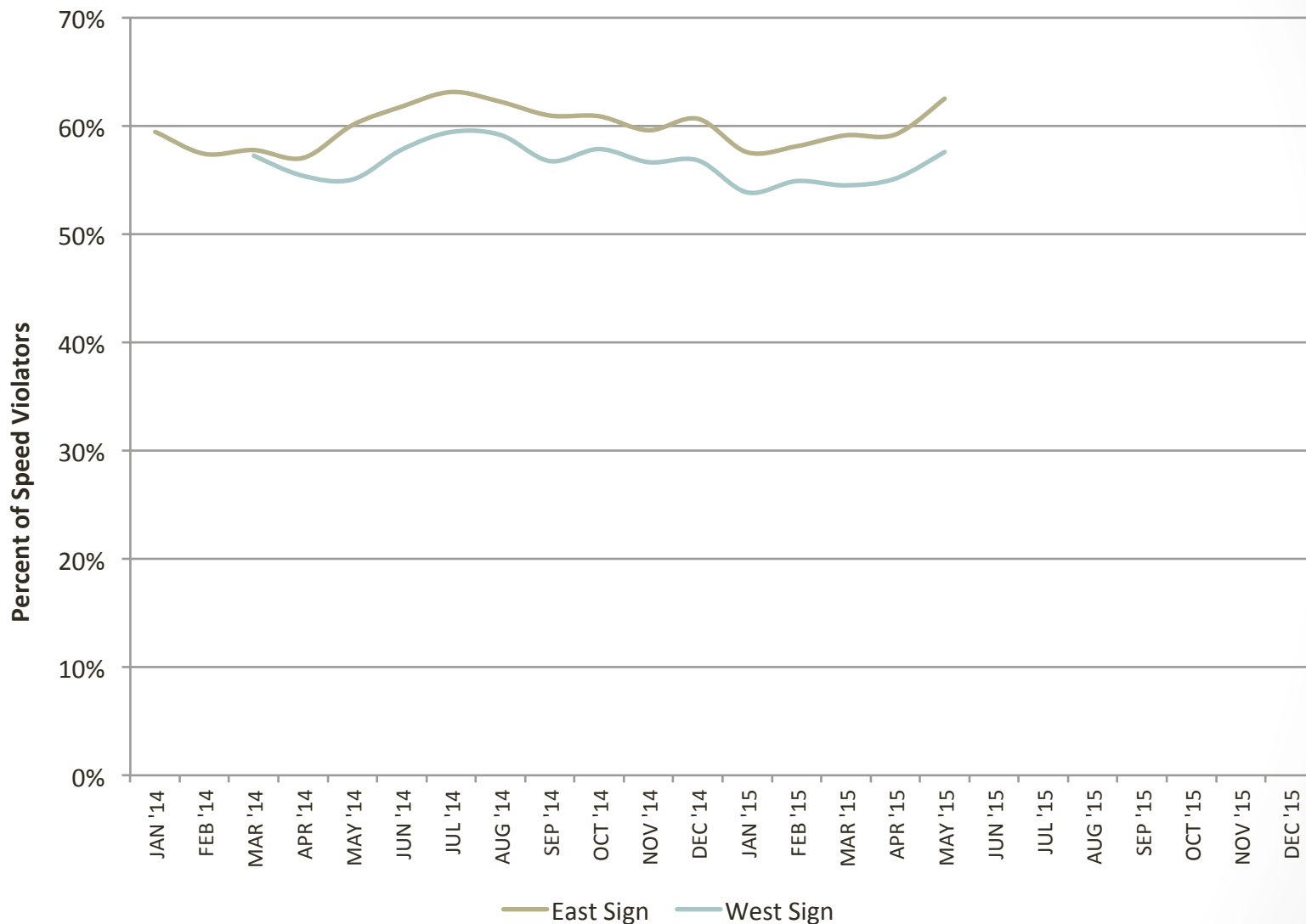
2015 Traffic Pattern (Daily Averages per ½ Hour)



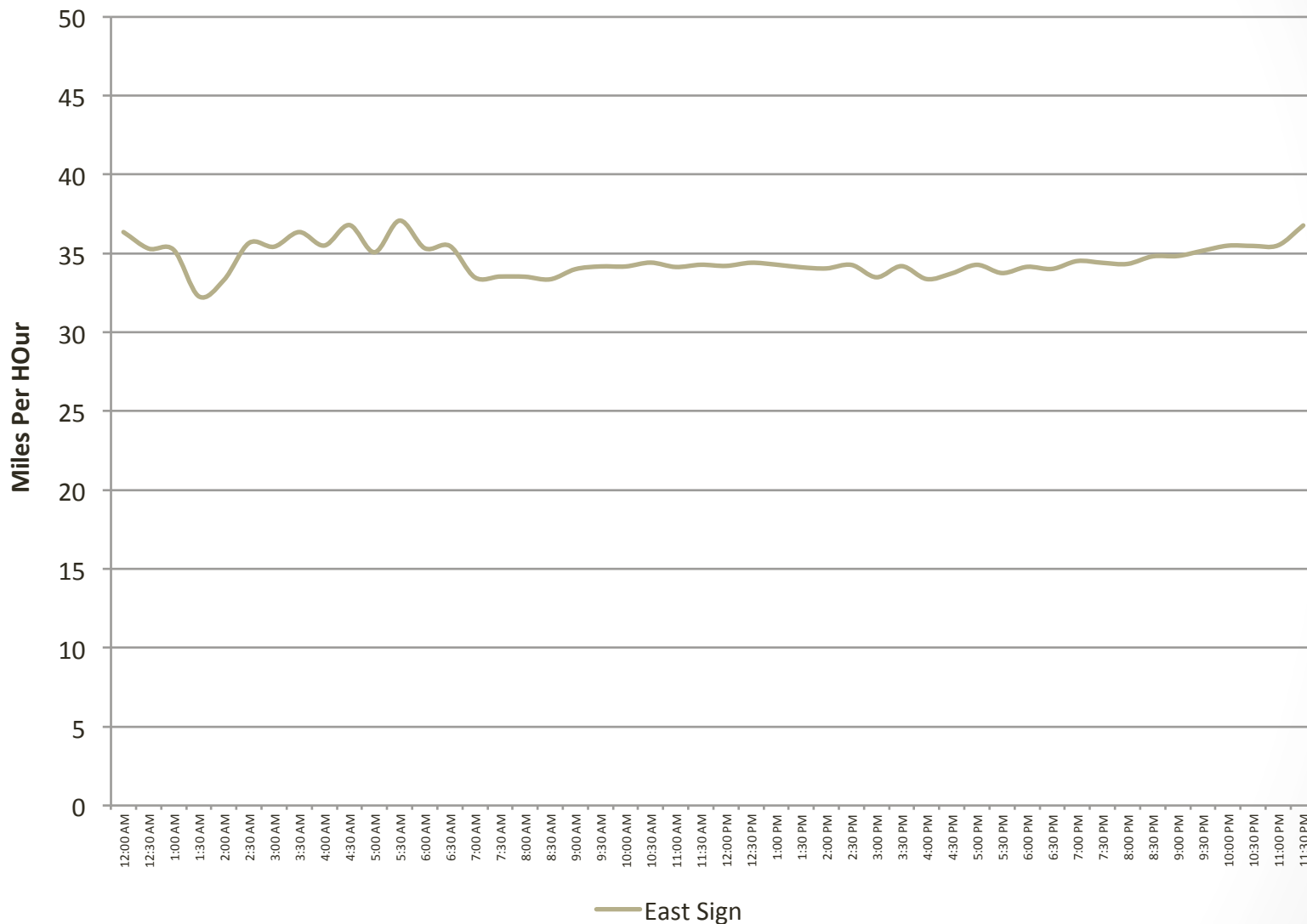
2015 YTD Average Violators Per Day



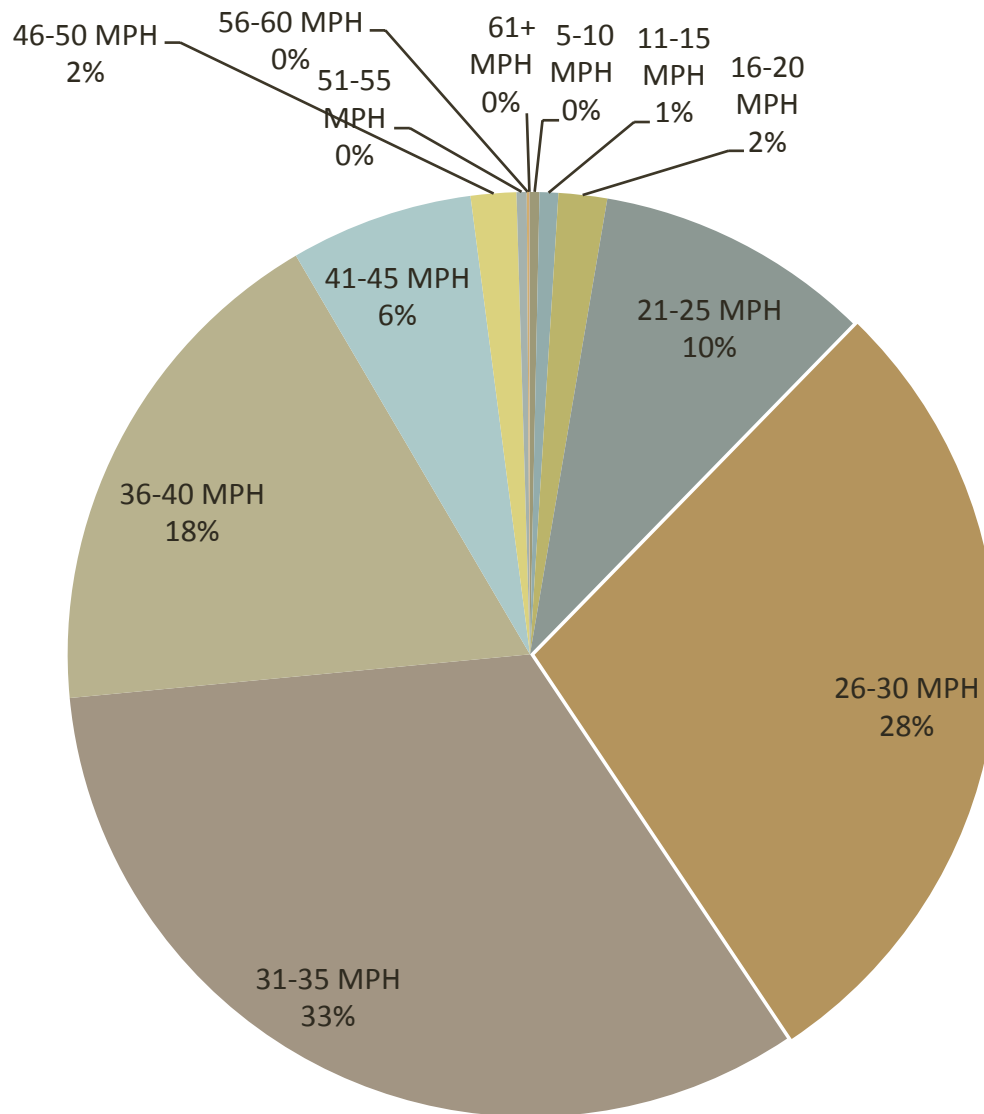
Percent of Violators by Month



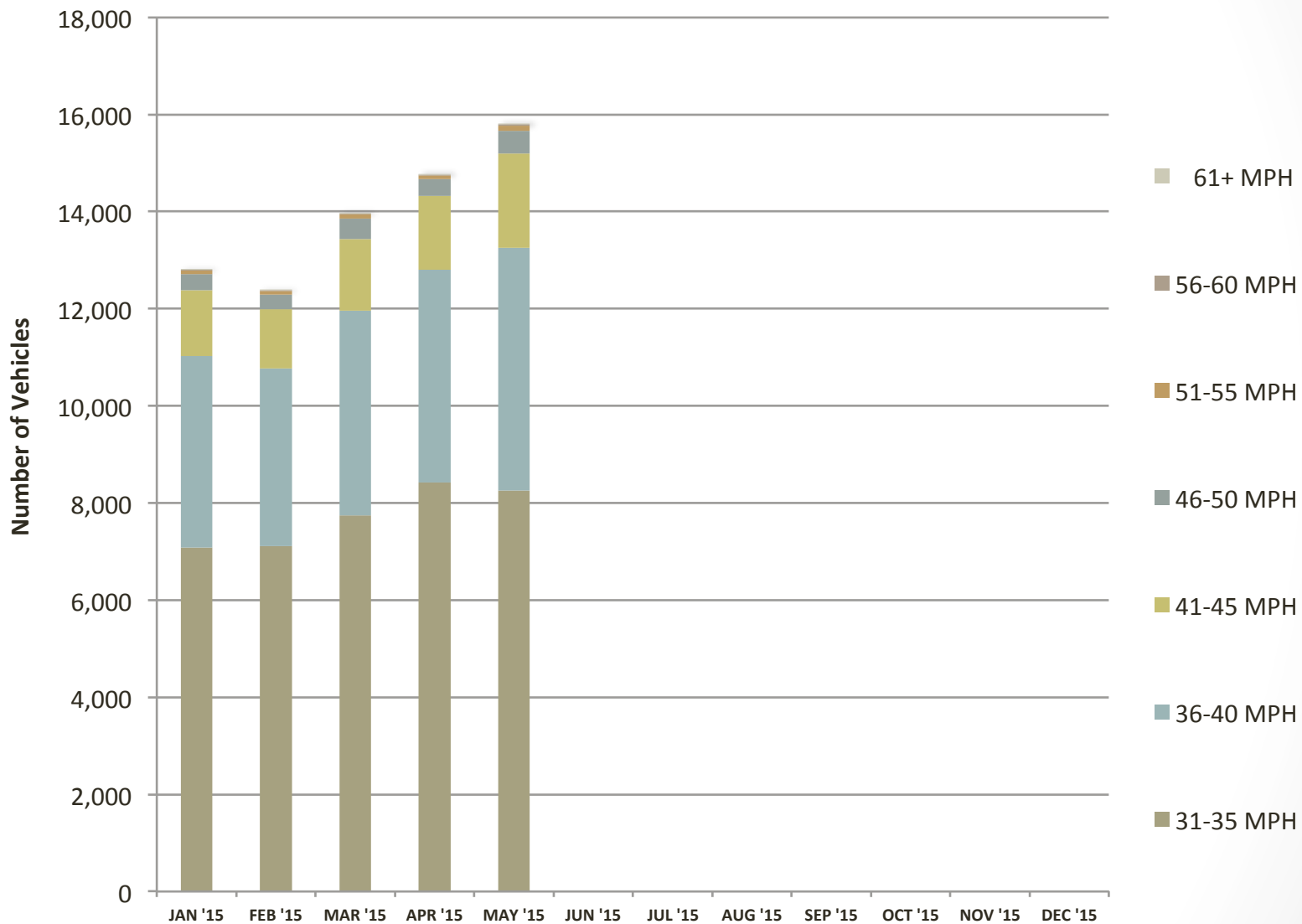
2015 Violator Average Speed (Daily Averages per ½ Hour)



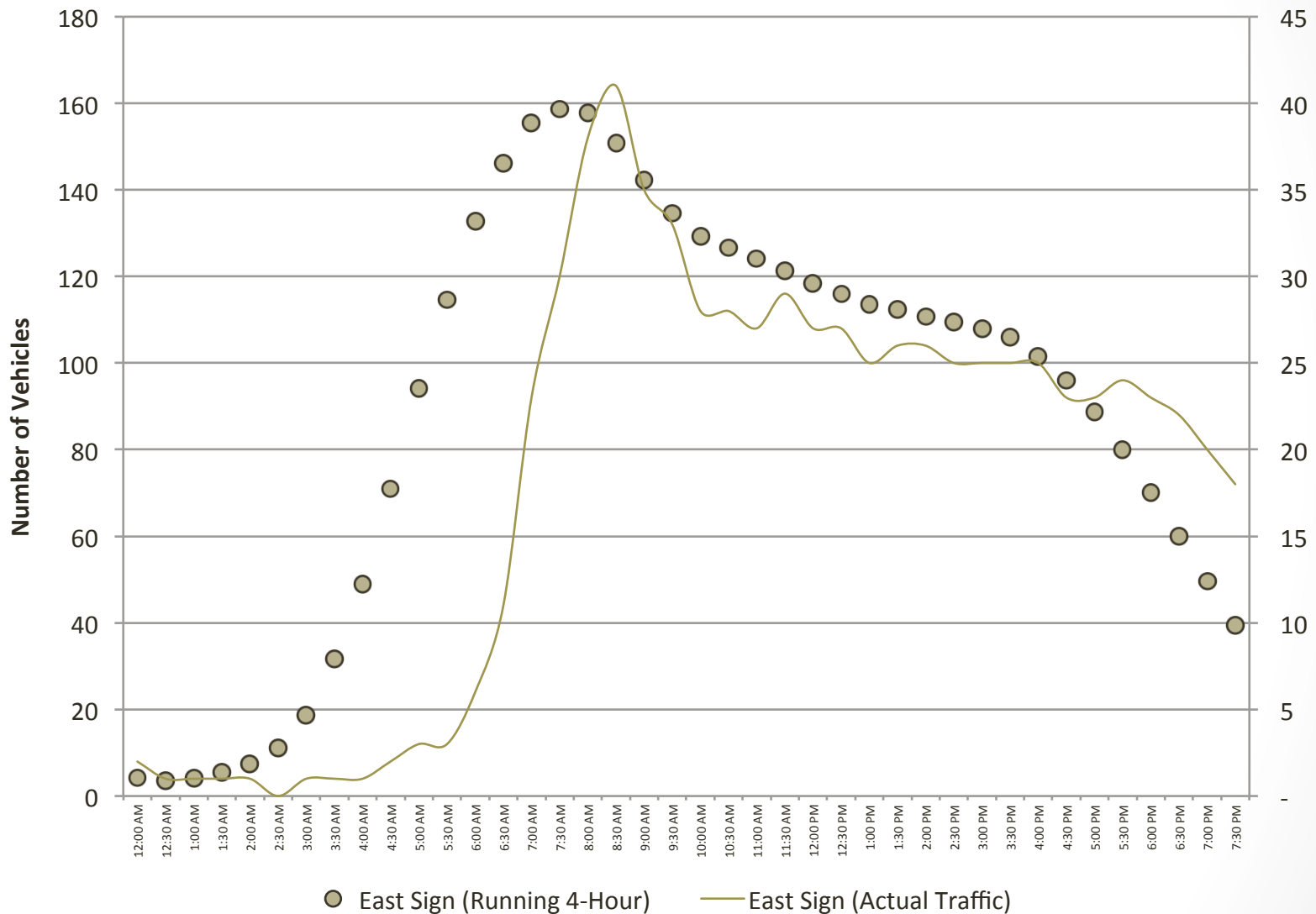
2015 Speed Breakdown (East Sign)



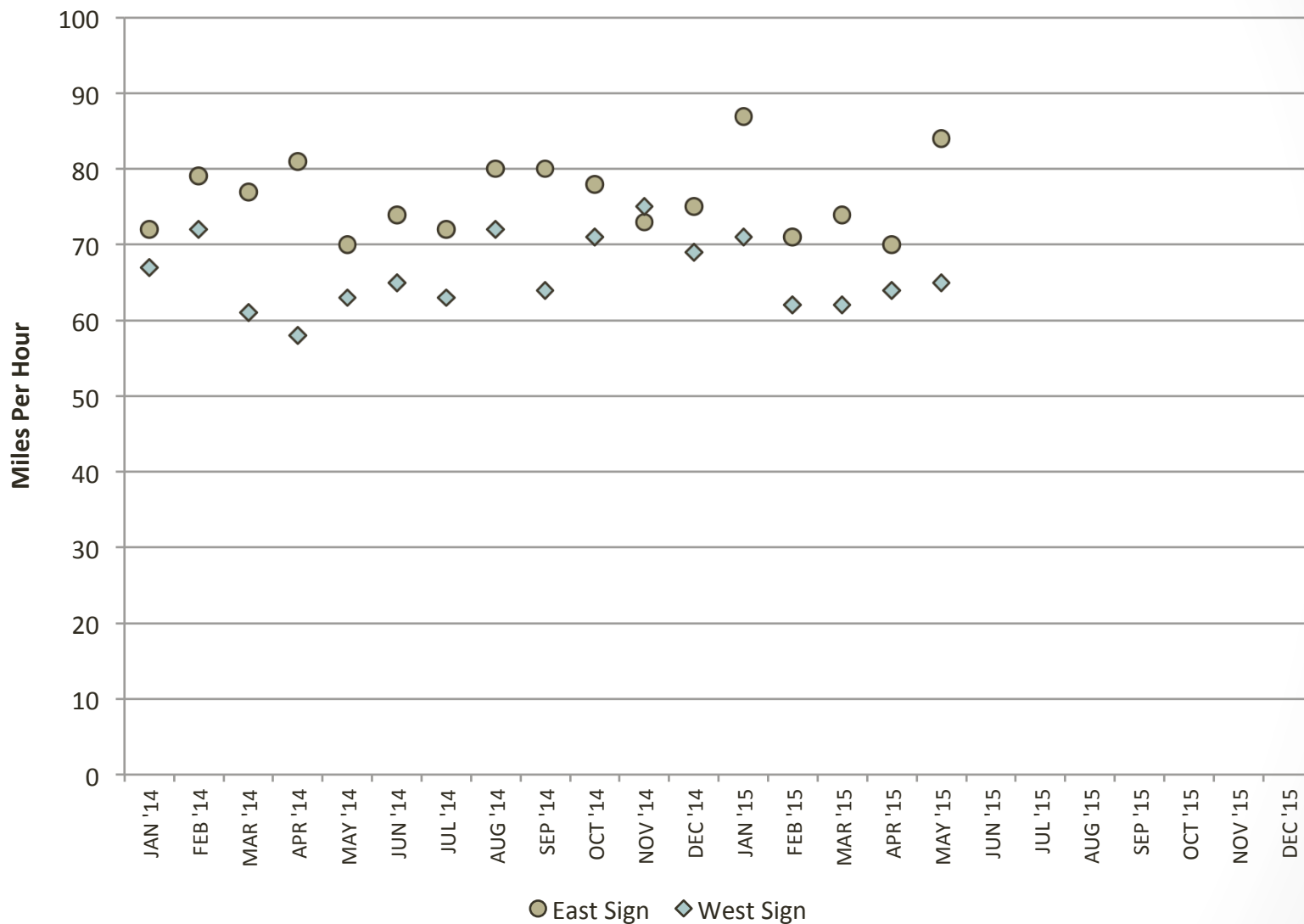
2015 Violator Speed Bands (East Sign)



Ideal Patrol Time Segments (2015 Running 4-Hour Averages)



Peak Speed By Month



2015 Patrol Impact Analysis (Percent Violators 5AM - 8PM)

